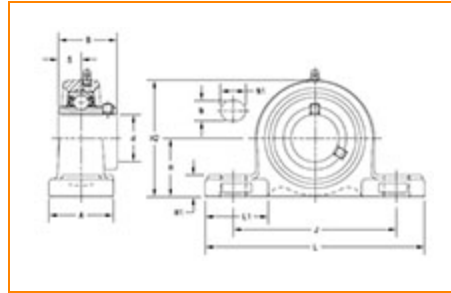




**The Timken Company**  
 4500 Mt Pleasant St. NW  
 N. Canton, OH 44720  
 Phone: (234) 262-3000

E-Mail: [CustomerCAD@timken.com](mailto:CustomerCAD@timken.com) • Web site: [www.timken.com](http://www.timken.com)

## Timken Part Number UCP215, UCP 200 Pillow Block Housed Units - Set Screw Locking



[Specifications](#) | [Dimensions](#) | [Basic Load Ratings](#)

### Specifications

<b>Bearing Number</b>	UC215
<b>Shaft Size d</b>	75 mm
<b>Weight</b>	16.3 lb 7.4 Kg
<b>UPC Code</b>	087796073395
<b>Locking Style</b>	Set Screw Locking
<b>Housing Construction</b>	Two-Bolt Pillow Block

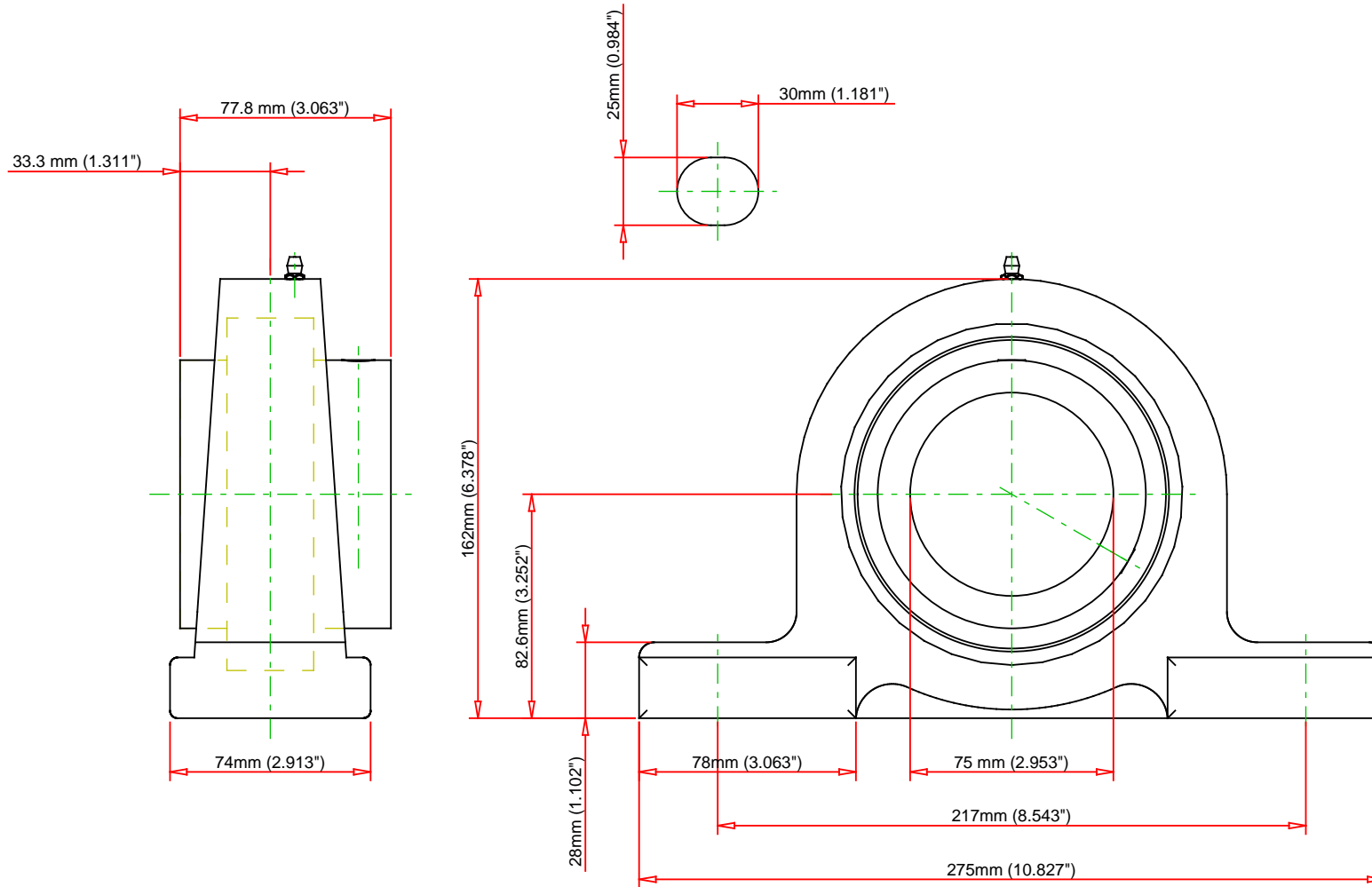
### Dimensions

<b>Base to Center Height H</b>	82.6 mm 3.252 in
<b>Total Length L</b>	275.00 mm 10.827 in

<b>Housing Width A</b>	74.00 mm 2.913 in
<b>Bolt Hole Spacing J</b>	217.00 mm 8.543 in
<b>Bolt Hole Size N</b>	25.00 mm 0.984 in
<b>Bolt Hole Length N1</b>	30.00 mm 1.181 in
<b>Foot Height H1</b>	28.00 mm 1.102 in
<b>Total Height H2</b>	162.00 mm 6.378 in
<b>Dimension L1</b>	78.00 mm 3.063 in
<b>Inner Ring Width B</b>	77.80 mm 3.063 in
<b>Center of Bearing from End S</b>	33.3 mm 1.311 in

## Basic Load Ratings

<b>Static Load Rating</b>	10858 lbf 48300 N
<b>Dynamic Load Rating</b>	15152 lbf 67400 N



Bearing Number	UC215			
Load Ratings - C <sub>r</sub>	15152	lbf	67400	N
Load Ratings - C <sub>0r</sub>	10858	lbf	48300	N
Weight	16.3	lb	7.4	kg
Bolt Size	M20			

**TIMKEN**

THE TIMKEN COMPANY  
NORTH CANTON, OHIO USA

**UCP215**

UCP 200 Pillow Block Housed Units - Set  
Screw Locking

Every reasonable effort has been made to ensure the accuracy of the information contained in this writing, but no liability is accepted for errors, omissions or for any other reason.

**FOR DISCUSSION ONLY**